



GENERAL DESCRIPTION 功能叙述

The M3162, is a CMOS ASIC encoder paired with M3172. It will en-code 12 parallel input and serially transmit them to the output when \overline{TE} depressed. These address inputs are 3 states i.e. LOW(0)、OPEN(X)、HIGH(1).

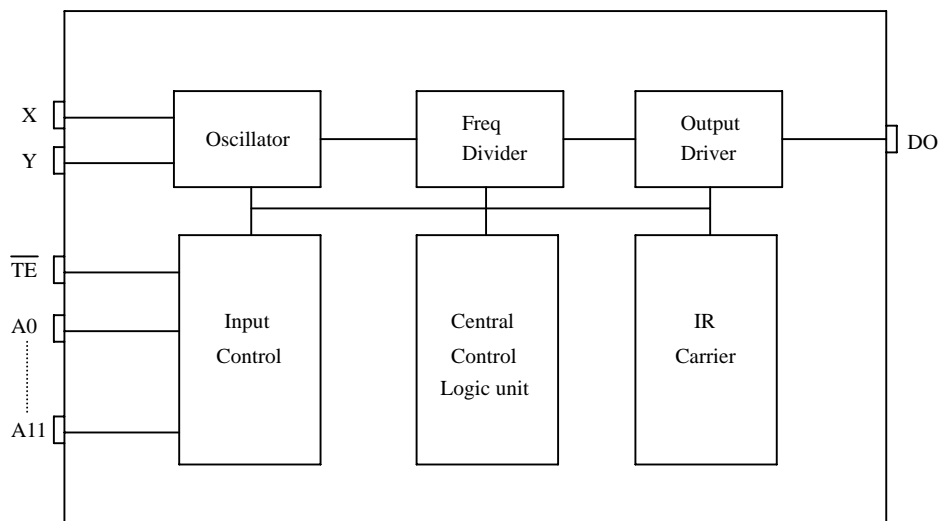
FEATURES 产品特长

- CMOS technology
- $3^{12} = 531,411$ codes, "0"、"X"、"1" Tri-states.
- 4 cycles transmission each time.
- Built-in IR carrier: suffix-IR.

APPLICATIONS 产品应用

- Car/home alarm system, garage control etc..

BLOCK DIAGRAM 功能方块图



*All specs and applications shown above subject to change without prior notice.
(以上电路及规格仅供参考,本公司得径行修正)



3 STATES ENCODER
3 态编码 IC

EN/DECODER

M3162

ABSOLUTE MAXIMUM RATING

(TA=25°C)

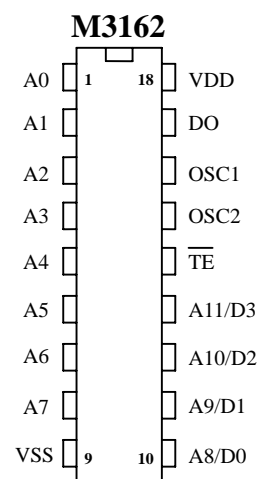
Parameter	Rating	Unit
Supply Voltage	-0.3 to 15	V
Input Voltage	-0.2~V _{DD} +0.2	V
Operating Temperature	0 to 70	°C
Storage Temperature	-50 to 125	°C

ELECTRICAL CHARACTERISTICS

Characteristics	Sym.	Min.	Typ.	Max.	Unit	Conditions
Operating Voltage	V _{DD}	2.4	—	15	V	
Operating Current	I _{OP}	—	0.1	1	mA	No load
Quiescent Current	I _{SB}	—	0.1	0.5	μ A	
Output Drive Current	I _O	—	2	—	mA	@V _{DS} =1.2V
Input Voltage	V _{IH}	V _{DD} -0.2	V _{DD}	V _{DD}	V	
	V _{IL}	V _{SS}	V _{SS}	V _{SS} +0.2		
Oscillator Frequency	Fosc	—	76	—	KHz	External ± 30%, Rosc=390K Ω

PIN DESCRIPTION

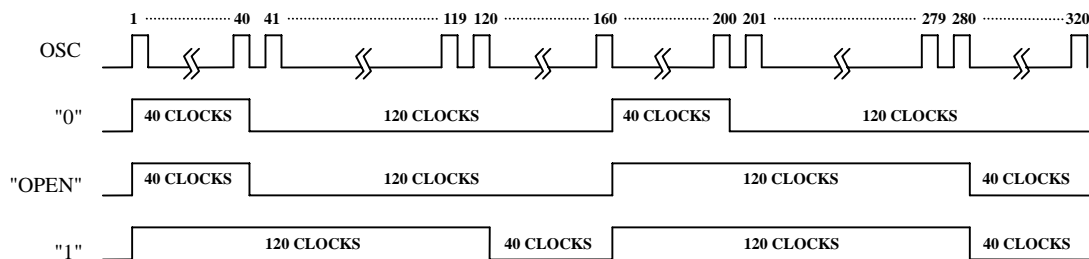
No.	Pin name	Description
1~8	A0~A7	3 states address inputs
9	VSS	Negative power supply
10~13	A8/D0~A11/D3	3 states address inputs/ Data pin
14	$\overline{\text{TE}}$	Transmit enable
15	OSC2	Oscillator output
16	OSC1	Oscillator input
17	DO	Data output
18	VDD	Positive power supply



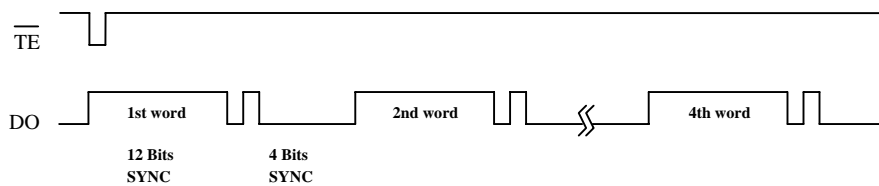


TIMING WAVEFORM

(1) Bit format

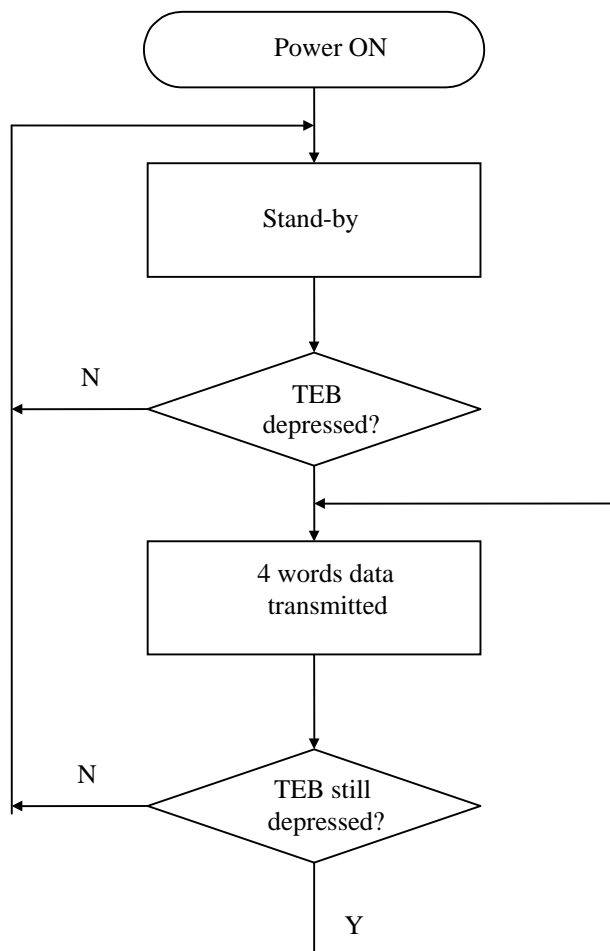


(2) TIMING DIAGRAM





OPERATING FLOWCHART



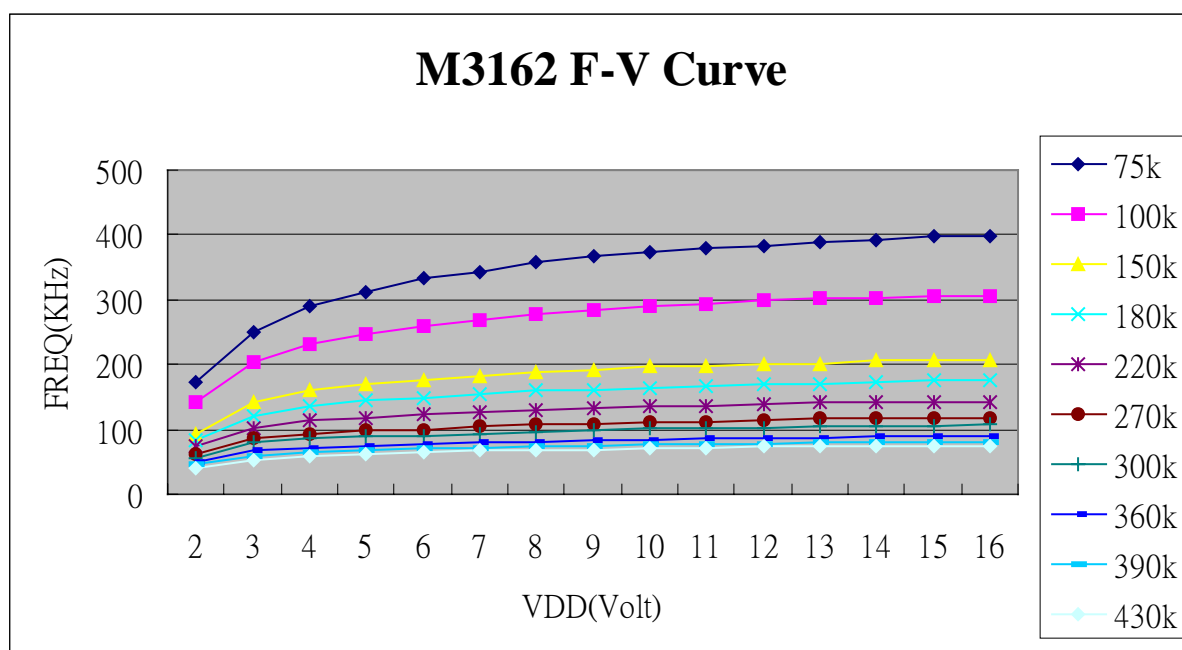


RECONNENDED OSCILLATOR PARAMETERS

Rosc(KΩ)	Freq(KHz)
75	384
100	298
150	200
180	170
220	138
270	113
300	103
360	86
390	78
430	73

DATA OUTPUT

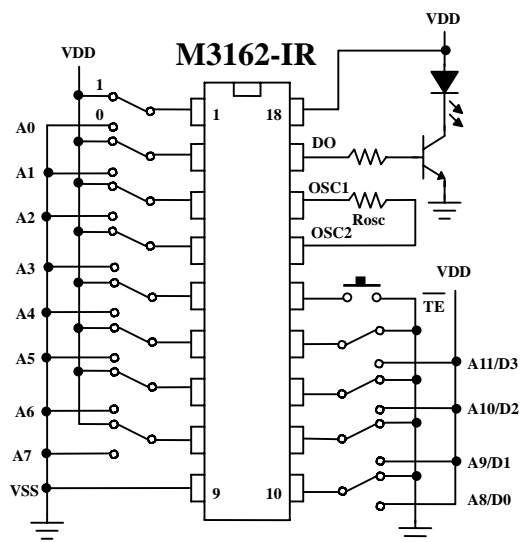
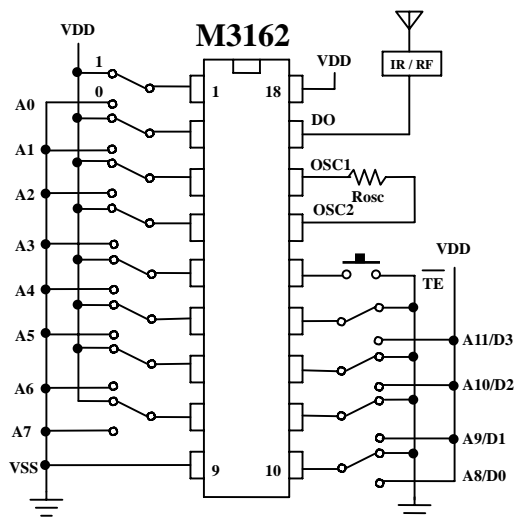
M3162 (D0~D3)	M3172 (D0~D3)
0 (VSS)	0 (VSS)
X (OPEN)	1 (VDD)
1 (VDD)	1 (VDD)
POWER ON	0 (VSS)





APPLICATION DIAGRAM 参考电路图

IR 内建发射



*All specs and applications shown above subject to change without prior notice.
(以上电路及规格仅供参考,本公司得径行修正)