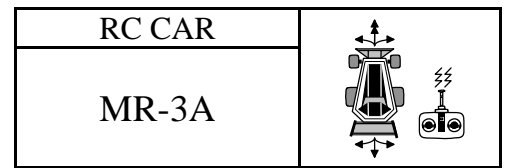




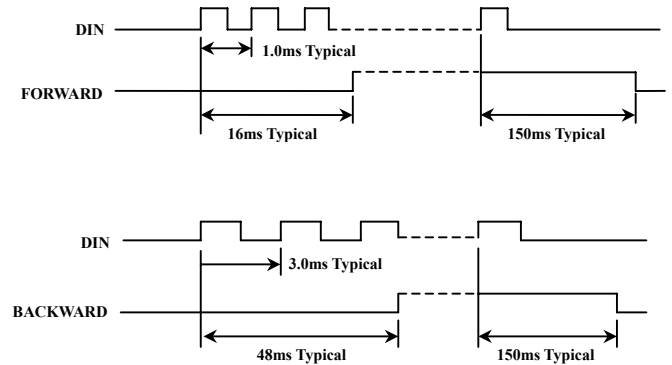
RC CAR
2 FUNCTIONS

2 功能遙控車



FEATURES 功能敘述

- 2 functions : FW, BW.
- Built-in regulator.
- FW(Frequency of Forward) FQ1=800~1200 Hz
- BW(Frequency of Backward) FQ2 =200~400 Hz



APPLICATION 產品應用

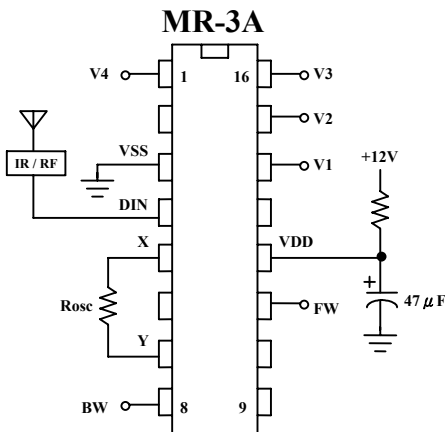
- RC car etc..

ELECTRICAL CHARACTERISTICS 電氣規格

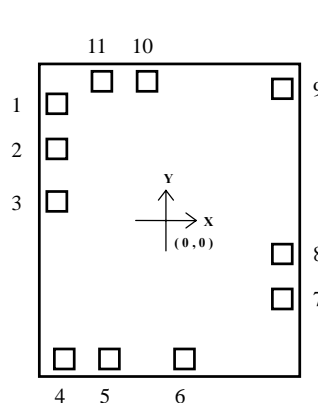
(@V_{DD}=3V unless otherwise specified)

Characteristics	Sym.	Min.	Typ.	Max.	Unit	REMARKS
工作電壓 Operating Voltage	V _{DD}	2.5	3	4.3	V	
工作電流 Operating Current	I _{OP}	—	8	—	mA	No load
靜態電流 Quiescent Current	I _{SB}	—	—	—	μA	
振盪頻率 Oscillator Frequency	F _{OSC}	—	76	—	KHz	External±30%, R _{osc} =300KΩ
工作溫度 Operating Temperature	Temp.	0	25	60	°C	

APPLICATION DIAGRAM 參考電路圖



PAD ASSIGNMENT & POSITON



UNIT : μm

No.	PAD	X	Y
1	V2 / VO1	390	362.25
2	V3 / VI2	230.25	362.25
3	V4 / VO2	40.5	362.25
4	VSS	-468.75	285.75
5	DIN / SI	-468.75	135.75
6	X	-468.75	-120.75
7	Y	-272.25	-363
8	BW / BACK	-122.25	-363
9	FW / FOR	435	-363
10	VDD	468.75	-116.25
11	V1 / VI1	468.75	41.25

* IC CHIP ~ 1.19 x 0.98 mm² , substrate to VDD.

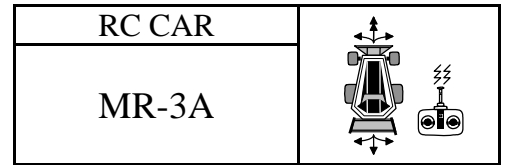
*All specs and applications shown above subject to change without prior notice.

(以上電路及規格僅供參考,本公司得逕行修正)



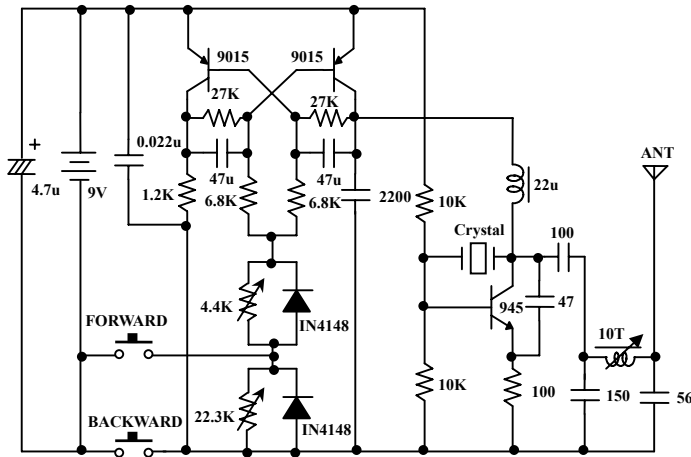
RC CAR
2 FUNCTIONS

2 功能遙控車

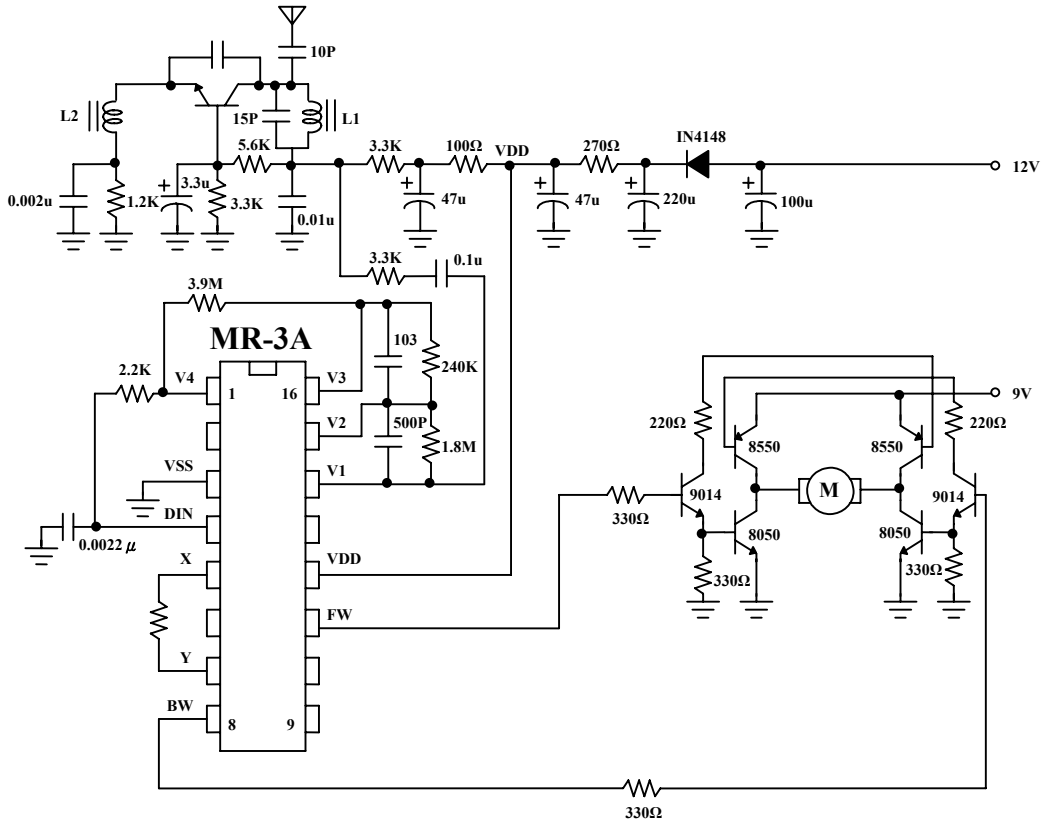


APPLICATION DIAGRAM 參考電路圖

TX CIRCUIT



RX CIRCUIT



* All specs and applications shown above subject to change without prior notice.
(以上電路及規格僅供參考,本公司得逕行修正)